

Offer No.:

Společnost:



Concrete pump: **KCP24ZX-150** chassis **MAN TGA18.280 4x2BB**

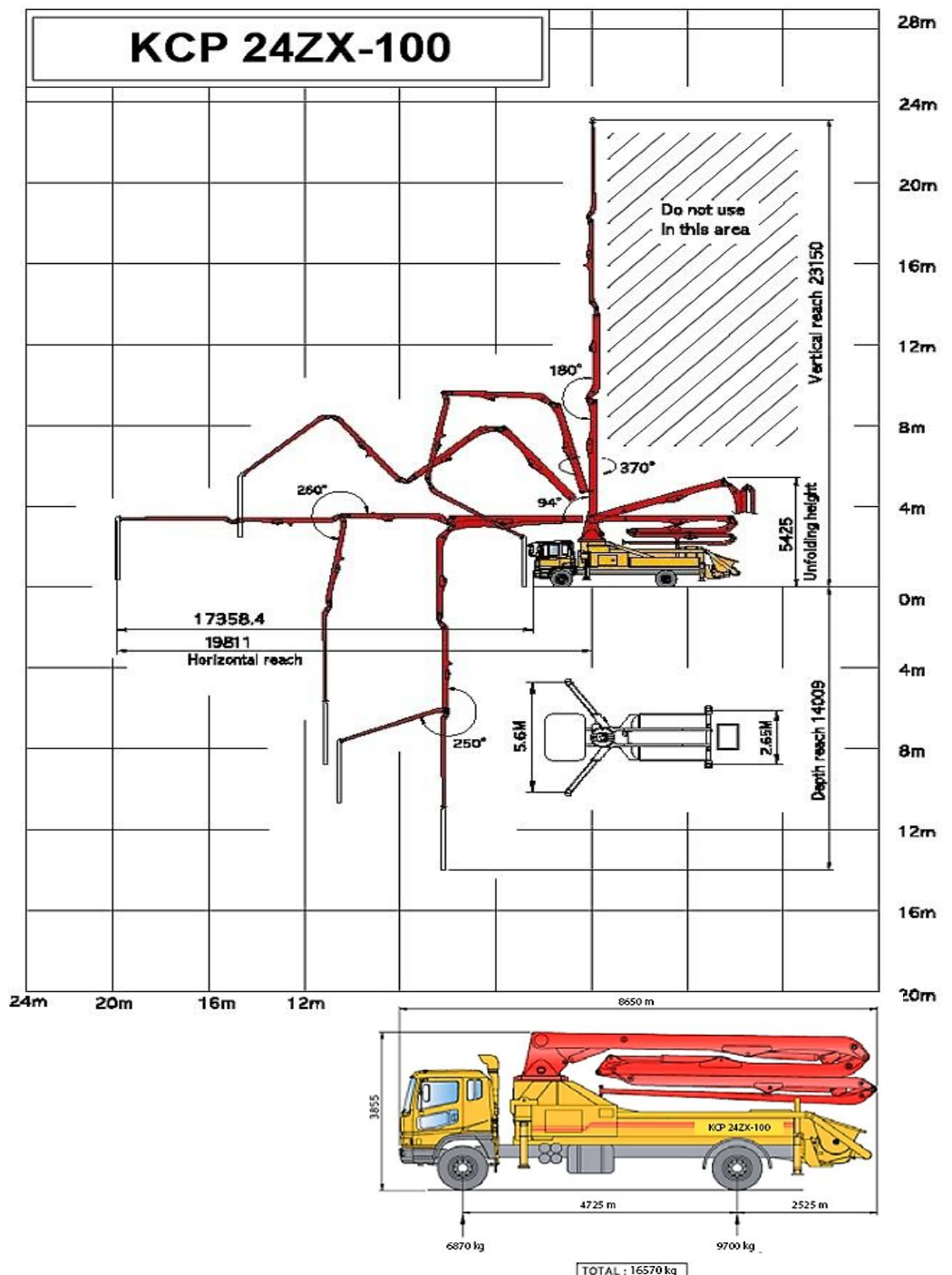
diagram:

S pozdravem



Antonín BERNARD  
+420 777764604  
[www.kcppump.eu](http://www.kcppump.eu)  
[info@kcppump.eu](mailto:info@kcppump.eu)  
[bernard@kcppump.eu](mailto:bernard@kcppump.eu)

**KCPPUMP s.r.o.**  
549 12 VYSOKOV 140  
**CZECH REPUBLIC**



## **BOOM SPECIFICATIONS**

Vertical reach :	<b>23,2m</b>
Horizontal reach:	<b>19,8m</b>
Reach from front of truck:	<b>21,4m</b>
Unfolding height:	<b>5,4m</b>
Rotation:	<b>370°</b>
Regulatory proportional:	<b>HAWE</b>
Proportional boom:	<b>YES</b>
Remote control :	<b>HBC - radio</b>
Delivery line:	<b>125mm</b>
End hose length:	<b>3,0m</b>
Outrigger spread - front:	<b>X/5,6m</b>
Outrigger spread - rear:	<b>T/2,65m</b>
Max. outrigger weight:	<b>11.500kg</b>

## **PUMP SPECIFICATIONS**

Maximum output:	<b>150m<sup>3</sup>/hod.</b>
Concrete cylinder:	<b>230x180mm</b>
Regulating delivery:	<b>0-150m<sup>3</sup>/hod.</b>
Concrete cylinder design:	<b>HARD CHROME</b>
Stroke per minute:	<b>32/min</b>
Concrete pressure (rod):	<b>74,5bar</b>
Hopper capacity:	<b>0,6m<sup>3</sup></b>
Hopper lubricating system:	<b>CENTRÁL</b>
Diameter „S“ tube :	<b>200x180mm</b>
Hydraulic working pressure:	<b>350bar</b>
Hydraulic pump:	<b>K3V180S</b>
Water pump:	<b>GRUNDFOS</b>
Pressure / Delivery:	<b>20bar/120l/min</b>

## **STANDARD EQUIPMENT AND TECHNICAL INFORMATION**

- **4-arms boom**
- easy access to the all parts of concrete pump enabling easy and quick maintainance
- central lubrication of all machine
- single and innovative opened hydraulic system of oil circuit with superior efficiency
- wear plate and wear ring in concrete mixture displacement made of **TUNGSTEN CARBIDE**,
- with a guaranteed lifetime **150.000m<sup>3</sup>** at least.
- high pressure washer 20 bar and 80 bar
- accurate and reliable remote control **HBC**
- air conditioning, board computer, separate lubricating box
- pipe and hose holders, storage basket for accessories, end arm light



